



Nancy Grossman: The 1960s

Frieze Masters – Spotlight

October 6 – 9, 2016

Sculpture & Assemblage

Nancy Grossman (b.1940)

Black Landscape (aka Landscape), 1964

leather, fabric, metal, wood, fur, bristle, paper, nylon and paint
assemblage mounted to plywood

49 7/8" x 38" x 3 1/2" / 126.7 x 96.5 x 8.9 cm

signed and dated



Nancy Grossman (b.1940)

East of the Sun, 1964

metal, paper and paint assemblage mounted on Masonite

24" x 18" x 3 1/2" / 61.0 x 45.7 x 8.9 cm

signed and dated



Nancy Grossman (b.1940)

My Terrible Stomach, 1964/2015

assemblage of wood, metal, plastic, rubber and string

86 1/2" x 24 1/2" x 14 1/2" / 219.7 x 62.2 x 36.8 cm

signed and dated





Nancy Grossman (b.1940)

XEBELLOZI, 1964

leather, metal, fabric, paint and graphite assemblage on canvas
mounted on plywood

31" x 17 1/2" x 3 1/4" / 78.7 x 44.5 x 8.3 cm

signed and dated



Nancy Grossman (b.1940)

For David Smith, 1965

leather, metal, rubber, fabric and paint assemblage on canvas mounted
on plywood

85" x 85" x 6 3/4" / 215.9 x 215.9 x 17.1 cm

signed and dated



Nancy Grossman (b.1940)

Walrus, 1965

leather, fabric, bristle and rubber assemblage mounted on wood

24 1/2" x 24 1/2" x 2 5/8" / 62.2 x 62.2 x 6.7 cm

signed and dated



Nancy Grossman (b.1940)

Eldridge Series I, 1966

fabric, leather and graphite assemblage on canvas

49 3/4" x 37 1/2" x 3 1/2" / 126.4 x 95.3 x 8.9 cm

signed and dated





Nancy Grossman (b.1940)

Purple Glass, 1966

metal, leather, wood, fabric, glass, and rawhide assemblage on canvas
mounted on plywood

49 1/4" x 37 1/2" x 6" / 125.1 x 95.3 x 15.2 cm

signed and dated



Nancy Grossman (b.1940)

Potawatami, 1967

leather, rubber and metal assemblage on plywood

63 1/8" x 38" x 11 3/4" / 160.3 x 96.5 x 29.8 cm

signed and dated



Nancy Grossman (b.1940)

P.M., 1968

leather, wood, paint, epoxy and hardware

16 1/2" x 6" x 8" / 41.9 x 15.2 x 20.3 cm

signed and dated



Nancy Grossman (b.1940)

Untitled (Head with Long Spike), 1968

leather, wood, paint, epoxy and metal

17 1/4" x 7 3/8" x 11 1/2" / 43.8 x 18.7 x 29.2 cm

signed and dated





Works on Paper

Nancy Grossman (b.1940)

Subterranean Explosion, 1962

collage of various paper, ink and watercolor on paper
10 7/8" x 15" / 27.6 x 38.1 cm
signed and dated



Nancy Grossman (b.1940)

Black Thundercloud Landscape, 1963

mixed media collage with various papers and watercolor on paper
22 1/2" x 22 3/4" / 57.1 x 57.8 cm
signed and dated



Nancy Grossman (b.1940)

PC 31, 1963

collage and acrylic on paper
11 3/8" x 17 1/4" / 28.9 x 43.8 cm
signed and dated



Nancy Grossman (b.1940)

Untitled, 1963

mixed media collage on board
14" x 17 3/4" / 35.6 x 45.1 cm
signed and dated



Nancy Grossman (b.1940)

Untitled, 1963

mixed media collage with various papers, watercolor and ink on paper
11 1/4" x 15 1/2" / 28.6 x 39.4 cm
signed and dated





Nancy Grossman (b.1940)

Untitled, 1967

collage, watercolor, ink and polymer glue on paper

14 3/4" x 10" / 37.5 x 25.4 cm

signed and dated



Nancy Grossman (b.1940)

Battle-Axe, 1965

black ink on paper

16 3/4" x 13 7/8" / 42.5 x 35.2 cm sheet size

16 3/8" x 13 3/8" / 41.6 x 34.0 cm sight size

signed and dated



Nancy Grossman (b.1940)

Bridey I, 1965

black ink on paper

16 3/4" x 13 3/4" / 42.5 x 34.9 cm sheet size

16 3/8" x 13 3/8" / 41.6 x 34.0 cm sight size

signed and dated



Nancy Grossman (b.1940)

Bridey II, 1965

black ink on paper

16 3/4" x 13 3/4" / 42.5 x 34.9 cm sheet size

16 1/8" x 13 1/8" / 41.0 x 33.3 cm sight size

signed and dated





Nancy Grossman (b.1940)

Clatter Machine-Figure with Step-Up Forms (aka Beever Slats), 1965

black ink on paper

16 3/4" x 13 3/4" / 42.5 x 34.9 cm sheet size

16 1/8" x 13 1/8" / 41.0 x 33.3 cm sight size

signed and dated



Nancy Grossman (b.1940)

Untitled, 1965

black ink on paper

16 3/4" x 13 3/4" / 42.5 x 34.9 cm sheet size

15 7/8" x 13" / 40.3 x 33.0 cm sight size

signed and dated



Nancy Grossman (b.1940)

Untitled, 1965

black ink on paper

13 3/4" x 16 3/4" / 34.9 x 42.5 cm sheet size

12" x 16" / 30.5 x 40.6 cm sight size

signed and dated



Nancy Grossman (b.1940)

Untitled, 1965

black ink on paper

16 3/4" x 13 3/4" / 42.5 x 34.9 cm sheet size

16 1/8" x 12 7/8" / 41.0 x 32.7 cm sight size

signed and dated





Nancy Grossman (b.1940)
Untitled, 1965
charcoal on Strathmore charcoal paper
25" x 19" / 63.5 x 48.3 cm
signed and dated



Nancy Grossman (b.1940)
Untitled, 1965
charcoal on Strathmore charcoal paper
25" x 19" / 63.5 x 48.3 cm
signed and dated



Nancy Grossman (b.1940)
And Joey, 1966
charcoal on grey paper
25 5/8" x 19 3/4" / 65.1 x 50.2 cm
signed



Nancy Grossman (b.1940)
it means that just because there are arrows-so, 1966
graphite on paper
16 3/4" x 13 7/8" / 42.5 x 35.2 cm sheet size
16 1/8" x 13 1/8" / 41.0 x 33.3 cm sight size
signed and dated

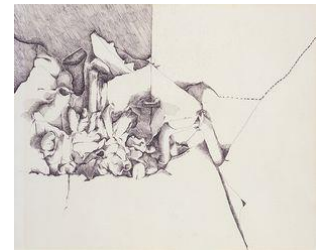




Nancy Grossman (b.1940)
Monkey Fur in an Empty Cage, 1966
graphite and crayon on paper
16 7/8" x 13 7/8" / 42.9 x 35.2 cm sheet size
16 1/8" x 13" / 41.0 x 33.0 cm sight size
signed and dated



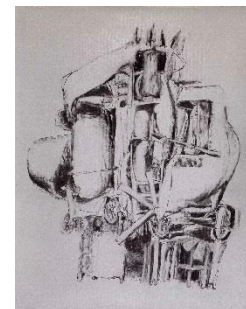
Nancy Grossman (b.1940)
Pipes and Other Mountains, 1966
black ink on paper
14" x 16 3/4" / 35.6 x 42.5 cm sheet size
12" x 15" / 30.5 x 38.1 cm sight size
signed and dated



Nancy Grossman (b.1940)
Siege-Throttler, 1966
charcoal on grey paper
25 5/8" x 19 3/4" / 65.1 x 50.2 cm
signed



Nancy Grossman (b.1940)
Tachistoscopia, 1966
charcoal on paper
25 5/8" x 19 3/4" / 65.1 x 50.2 cm
signed





Nancy Grossman (b.1940)
Two Studies for Sculpture on the Same Page, 1966
black ink on paper
17" x 13 7/8" / 43.2 x 35.2 cm
signed and dated



Nancy Grossman (b.1940)
Untitled, 1966
black ink on paper
17" x 14" / 43.2 x 35.6 cm sheet size
16 1/4" x 13" / 41.3 x 33.0 cm sight size
signed and dated



Nancy Grossman (b.1940)
Untitled, 1966
black ink on paper
16 3/4" x 13 3/4" / 42.5 x 34.9 cm sheet size
15 3/4" x 12 7/8" / 40.0 x 32.7 cm sight size
signed and dated



Nancy Grossman (b.1940)
Untitled, 1966
black ink and wash on paper
16 3/4" x 13 3/4" / 42.5 x 34.9 cm sheet size
16 1/2" x 13 1/2" / 41.9 x 34.3 cm sight size
signed and dated





Nancy Grossman (b.1940)

Untitled, 1966

black ink on paper

16 1/2" x 13 3/4" / 41.9 x 34.9 cm sheet size

16" x 12 7/8" / 40.6 x 32.7 cm sight size

signed and dated



Nancy Grossman (b.1940)

Untitled, 1966

black ink on paper

13 3/4" x 17" / 34.9 x 43.2 cm

signed and dated



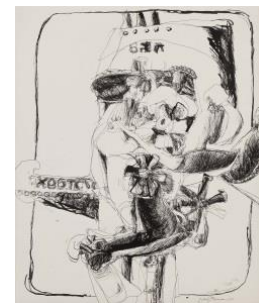
Nancy Grossman (b.1940)

Untitled with 3 Spikes and Sluice, 1966

black ink on paper

16 7/8" x 13 7/8" / 42.9 x 35.2 cm

signed and dated



Nancy Grossman (b.1940)

Byzantine Love Tickle, 1967

black ink on paper

16 3/4" x 14" / 42.5 x 35.6 cm sheet size

16 1/8" x 12 3/4" / 41.0 x 32.4 cm sight size

signed and dated





Nancy Grossman (b.1940)

Leo's Machine, 1967

black ink on paper

17" x 14" / 43.2 x 35.6 cm sheet size

16 1/4" x 13 1/4" / 41.3 x 33.7 cm sight size

signed and dated



Nancy Grossman (b.1940)

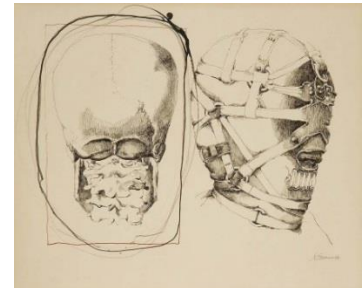
Skull and Head, 1968

black ink and graphite on paper

13 7/8" x 17" / 35.2 x 43.2 cm sheet size

12" x 14 1/2" / 30.5 x 36.8 cm sight size

signed and dated



Nancy Grossman (b.1940)

Two Heads, 1968

black ink on paper

13 3/4" x 17" / 34.9 x 43.2 cm sheet size

11 7/8" x 14 3/8" / 30.2 x 36.5 cm sight size

signed and dated



Nancy Grossman (b.1940)

Untitled, 1968

ink on paper

13 3/4" x 17" / 34.9 x 43.2 cm sheet size

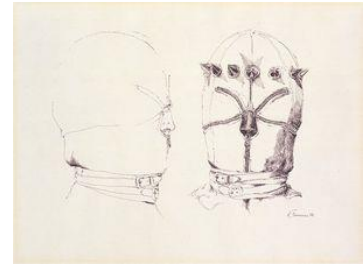
13 1/2" x 16 1/4" / 34.3 x 41.3 cm sight size

signed and dated





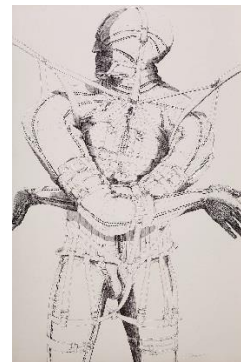
Nancy Grossman (b.1940)
Two Heads/Crown Around Crown, 1968
black ink on paper
13 3/4" x 17" / 34.9 x 43.2 cm sheet size
9 5/8" x 12 3/4" / 24.4 x 32.4 cm sight size
signed and dated



Nancy Grossman (b.1940)
Untitled (Head for N.G.), 1968
lithographic crayon on coated paper
12 1/2" x 17 1/4" / 31.8 x 43.8 cm sheet size
11 5/8" x 14 1/8" / 29.5 x 35.9 cm sight size
signed and dated



Nancy Grossman (b.1940)
Male Figure, 1969
black ink on paper
35" x 22 3/4" / 88.9 x 57.8 cm
signed and dated



Nancy Grossman (b.1940)
Untitled (male figure with arms crossed overhead), 1969
black ink on paper
35" x 23" / 88.9 x 58.4 cm
signed and dated

